

# Office & Commercial

Connected Building Solutions



Adding value to your  
most strategic asset –  
your building

# Is Your Building Rising Above the Rest?

---

At Distech Controls™, we understand that with tower cranes popping up all over town, you want to make sure your facility rises above the competition. We also know that attracting and retaining tenants who all have their own wish list in terms of office space can be a challenge. Rent increases, teams outgrowing their space, companies moving from the suburbs to the city to attract more talent; the pressure is on to consistently meet the needs of your clients.

## It's Not Just About Entrusting, It's About Empowering



### Owners and Facility Managers

Empower owners to attract tenants to their connected buildings and keep occupants happy via the customization of their ambient workplace conditions from anywhere, at any time.

Facility managers will appreciate how simple it is for them to track their space and energy usage, enabling them to take action for optimized use of their spaces.



### Tenants

Tenants will leverage future-ready technology that meets the expectations of occupants today, while also benefiting from a space that can accommodate their needs of tomorrow.



### Occupants

Fulfill expectations of today's connected occupants by providing them with a powerful user experience via intuitive interfaces that put them in control of their own comfort.





## Open, Unified Systems Are the Future

---


Building systems have traditionally been proprietary and not flexible like open systems. Proprietary systems speak different languages, resulting in incomplete visibility, data, and reliability, and leave you tied to one, often expensive, service provider.

In contrast, Distech Controls' commitment to open protocols and industry IT standards, combined with our best-of-breed technology offering, create a sustainable foundation that supports and evolves with your building system's life cycle, and lets you choose from competitive prices in service providers.

Distech Controls goes a step further by offering a market-leading unified approach to HVAC, lighting and sunshade controls. What this means for building owners is a solution that can provide up to 30% savings over conventional integrated lighting and BMS installations. A solution that is simple to install and configure.







Improved comfort can **benefit employee productivity** by up to **20%** with appropriate lighting, **50%** with appropriate temperature and **9%** with control over environmental settings

---



# Connected Building Solutions

---

## How Connected Building Solutions Help with **Tenants Wish List**

### **Integration with Building Services**

Unify the control of ambient settings such as lighting, sunblinds and temperature on your own company app by leveraging our open RESTful API. Allow occupants and visitors to engage with other building services like room booking, streamlined digital registry and badge access, catering and wayfinding.

### **Optimize Mixed Spaces**

Optimize any mix of areas such as open spaces, hot desking, and convertible rooms with ease. Repartitioning software helps maximize building productivity no matter how many times the space changes.

### **Energy Savings**

With a BAS, you can apply sophisticated controls that go beyond scheduling temperature set points for energy reduction and cost savings.

## How Connected Building Solutions Help with **Occupant Satisfaction**

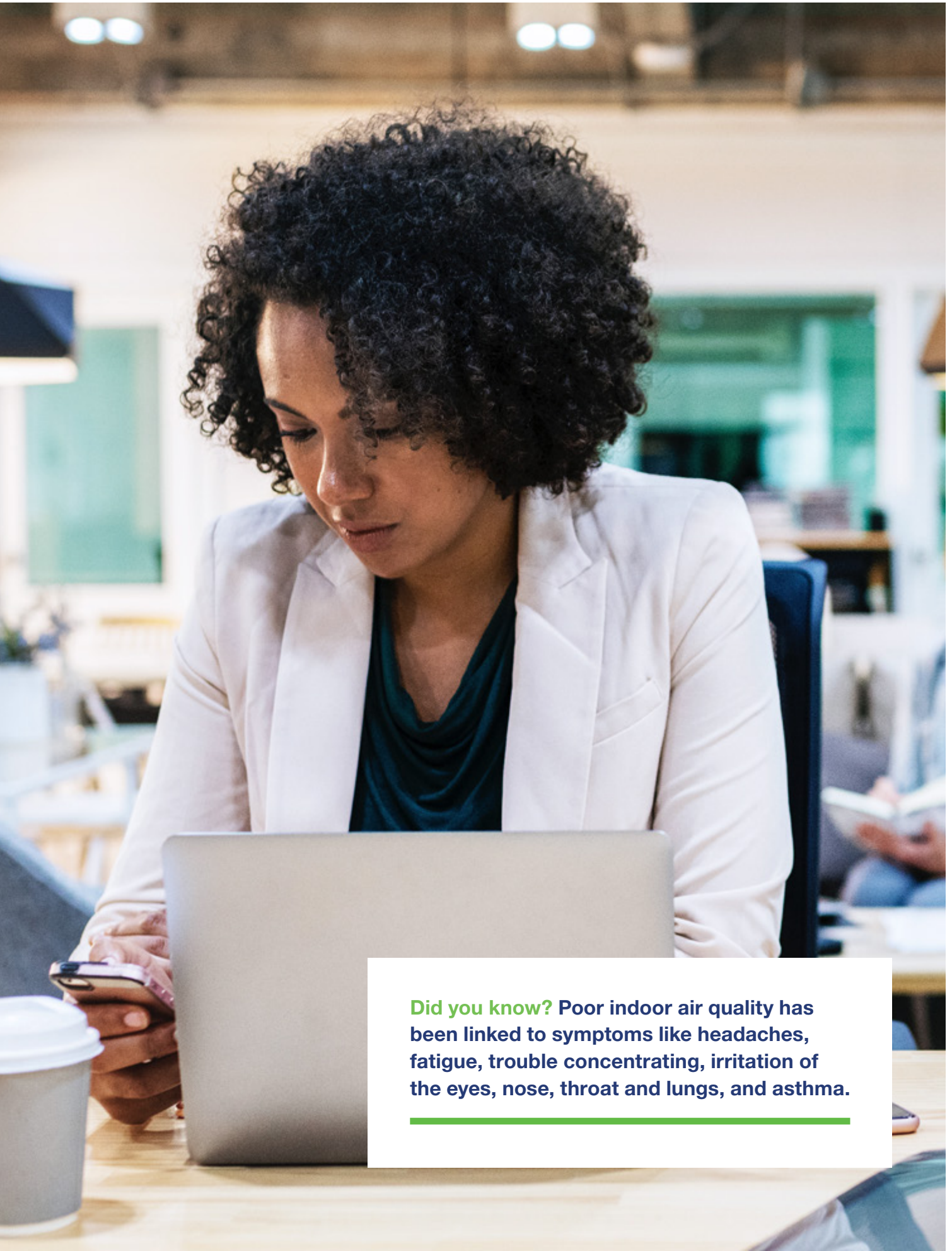
### **Unified Room Control Solution**

The flexibility of choosing room settings through an intuitive interface offers occupants full control over their environment. Delight users with the seamlessness of using a mobile app or a wall-mounted touchscreen to set a room's ambient conditions to their desired scene.

### **Healthy Environment**

By monitoring air filters, leveraging people counting and having self-calibrating, occupancy-based CO<sub>2</sub> sensors, buildings have better air quality and filtration, which helps occupants avoid health-related issues like the flu and asthma.





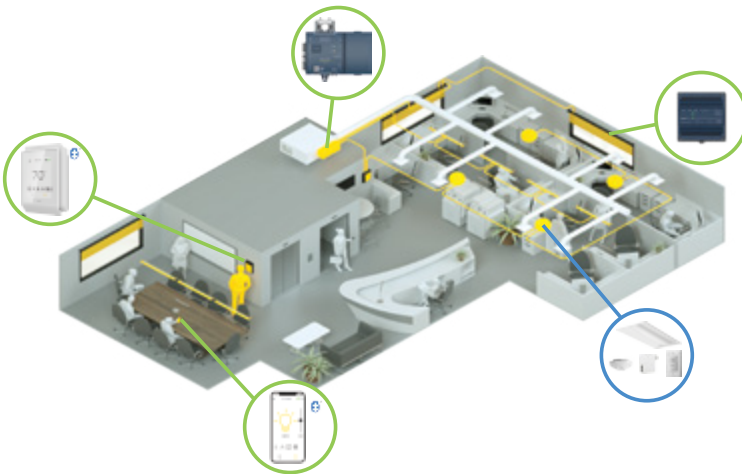
**Did you know?** Poor indoor air quality has been linked to symptoms like headaches, fatigue, trouble concentrating, irritation of the eyes, nose, throat and lungs, and asthma.

---



# Products

---



## Unified Room Control Solution

Rounding out the total building solution, this offering allows for the localized integration of nLight with the ECLYPSE Connected Controller Series at the room level. The Unified Room Control Solution increases response time and reliability of the system while adding additional flexibility to help deliver an optimal user experience for any application.

## Open Solutions

---



### ECLYPSE Controller Series

Connected BACnet/IP and Wi-Fi HVAC Product Series with built-in RESTful API



### EC-Net

Web-based multi-protocol building automation and energy management platform for multisite integration and management

## Visualization

---



### ENVISION

Responsive, web-based graphic design and visualization interface for easy local or remote access to your installed BMS systems

## User Interfaces

---



### Allure UNITOUCH and my PERSONIFY

State-of-the-art touchscreen user interface and mobile application

# Connecting people with intelligent building solutions for better health, better spaces, better efficiencies.

Distech Controls has set the standard in the industry for innovative, cost-effective, and truly open building and energy management systems that help increase operational savings and sustainability throughout the life cycle of your facilities.

The following is a sample of commercial buildings and offices currently rising above the competition with Distech Controls' solutions:

- Charles Wayne Properties, Daytona Beach, FL, United States
- Minnesota Department of Transportation (MNDOT) - District 4 Headquarters, Detroit Lakes, MN, United States
- Sony North America Headquarters, Rancho Bernardo, CA, United States
- Ergon Headquarters, Townsville, QLD, Australia
- 192 Central, Brisbane, QLD, Australia
- Silver Tower Center building, Wroclaw, Poland
- BNP Paribas, Paris, France
- Incity Tour, Lyon, France
- Distech Controls' European Head Office, Brignais, France
- Hikari - Energy Positive Office Building, Lyon, France
- Dockworks Business Park, Rotterdam, Netherlands

And many more.

---

**DISTECH**  
CONTROLS™

---

Contact our team today to learn how our solutions can improve operations and cost savings in your facilities.

**[www.distech-controls.com](http://www.distech-controls.com)**  
[sales@distech-controls.com](mailto:sales@distech-controls.com)